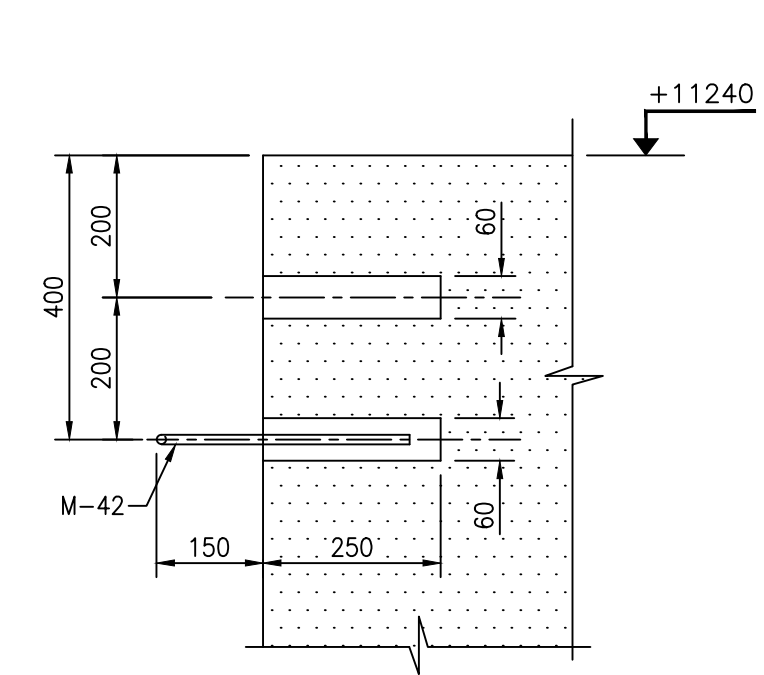
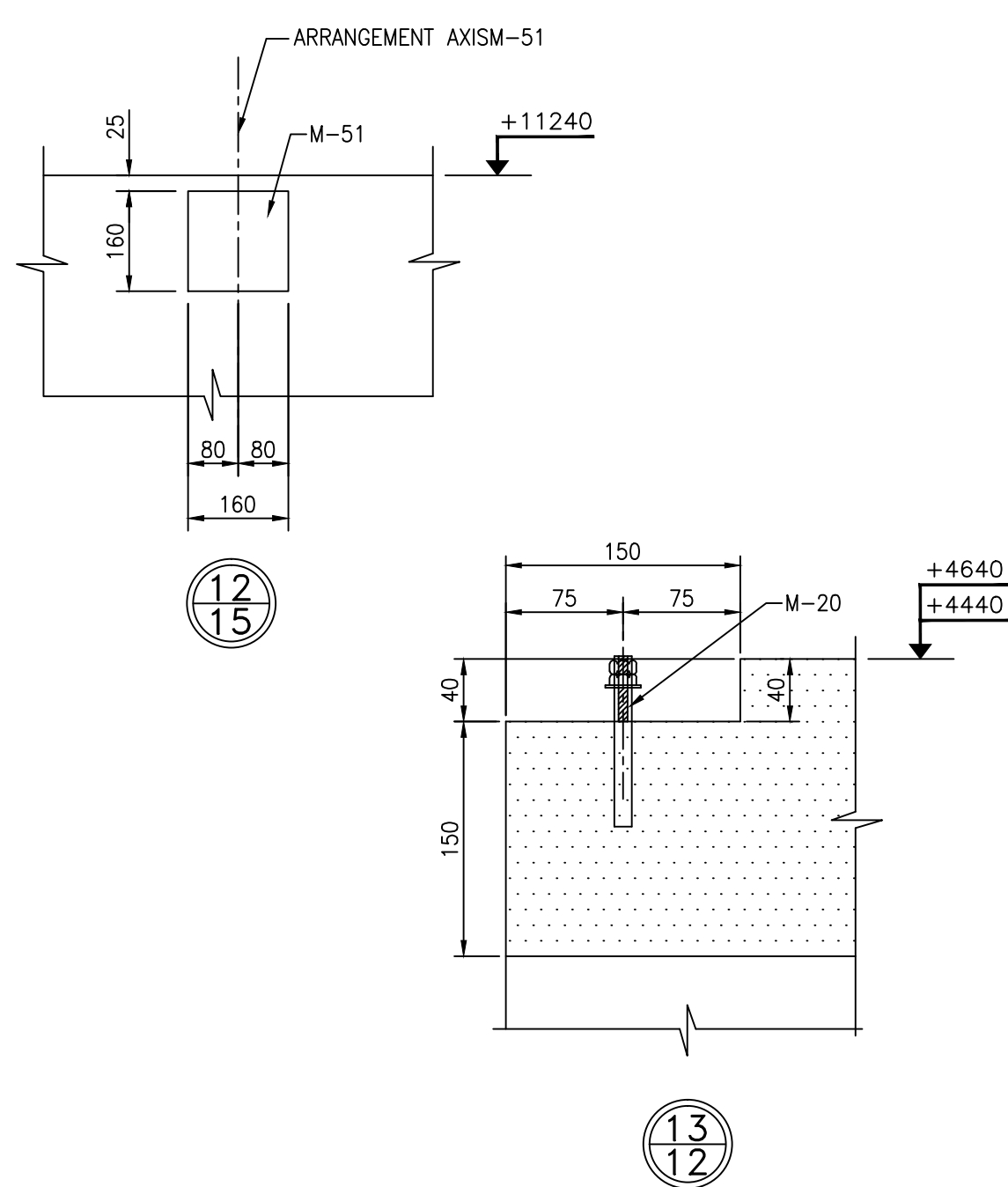
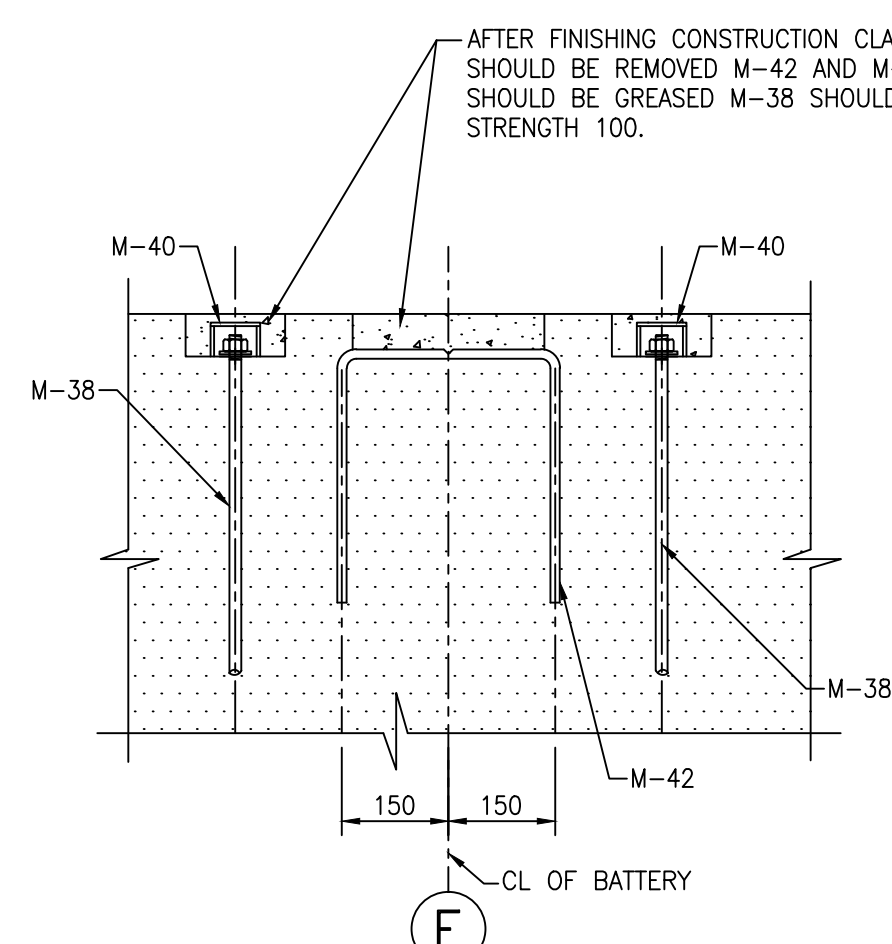
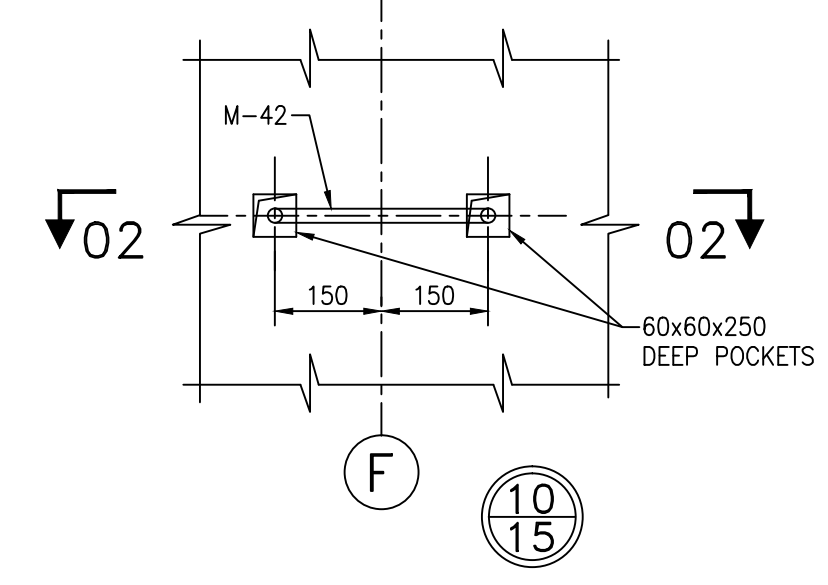
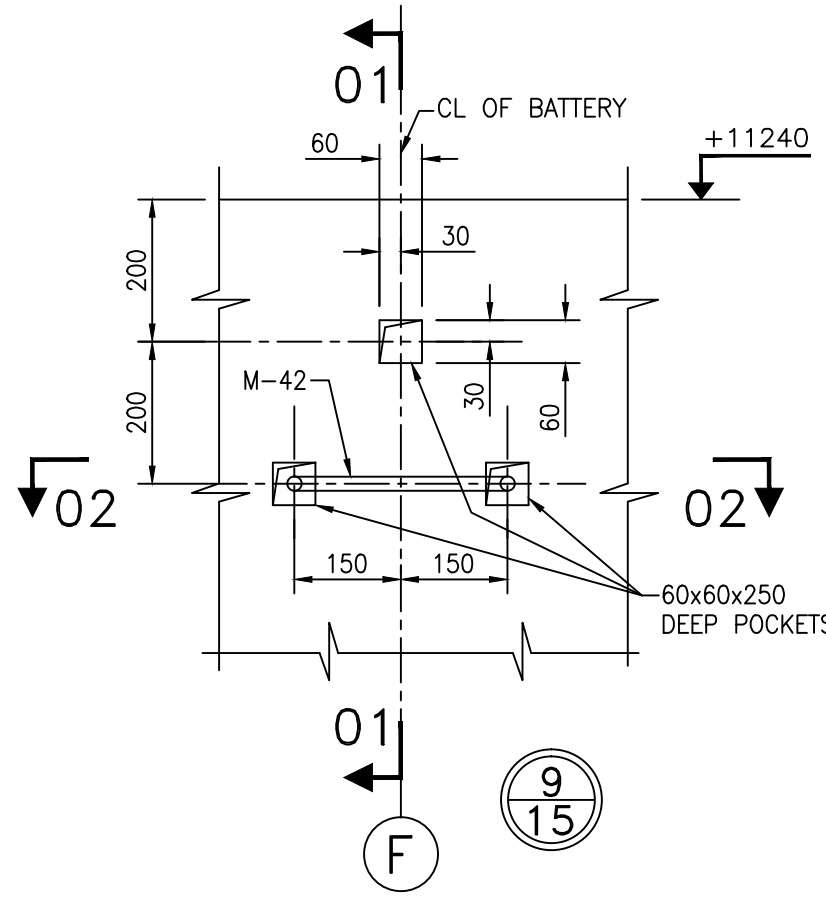


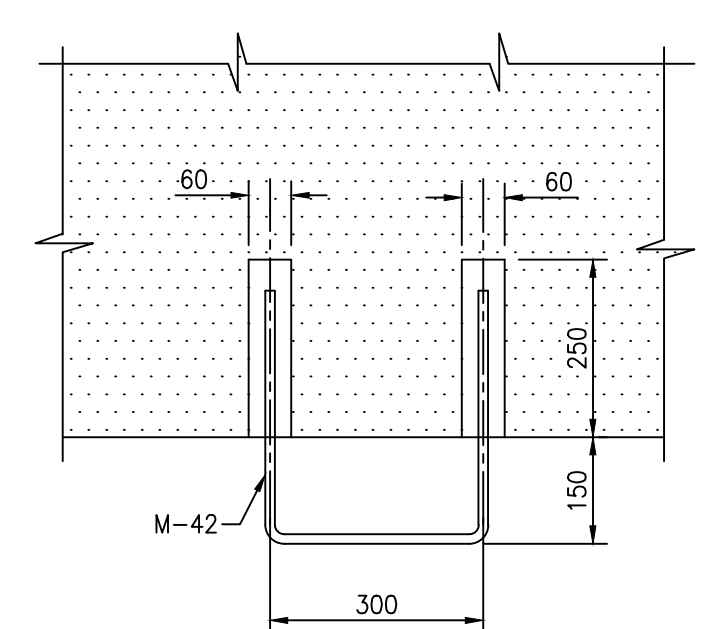
VIEW ALONG  
SECTION 13-13



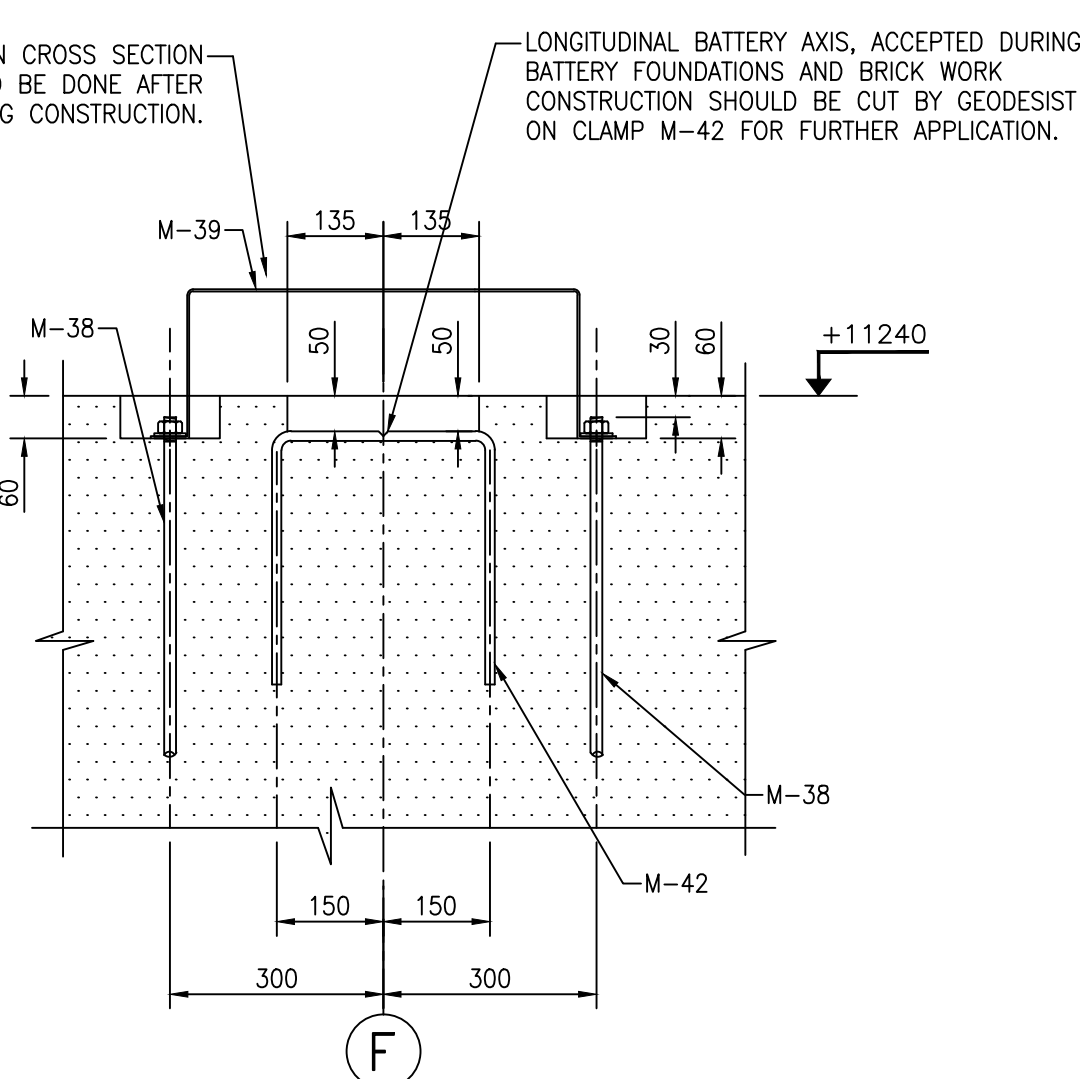
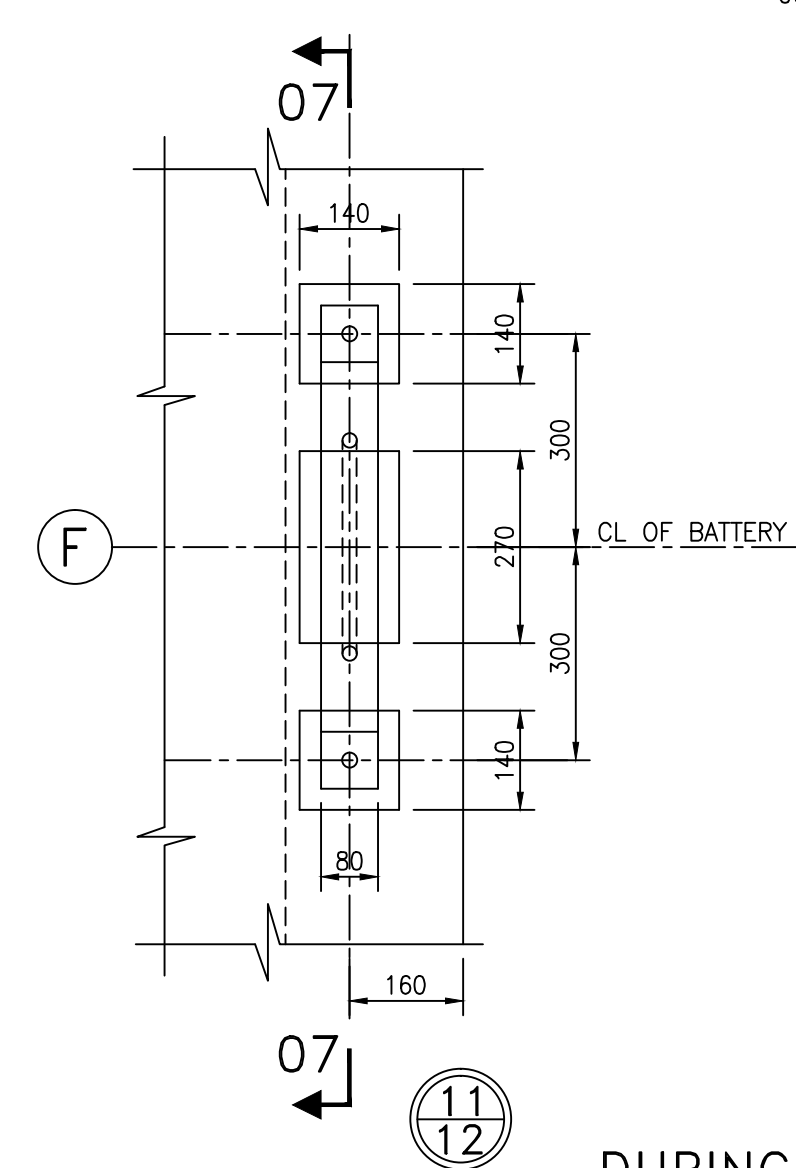
SECTION 01-01



SECTION 06-06






SECTION 02-02  
CEMENT MORTAR, STRENGTH SO



SECTION 07-07

DURING CONSTRUCTION

NOTES-  
1. THIS SHEET TO BE CONSIDERED TOGETHER WITH SHEET K-16.

The contents of this document or any part of it shall remain the property of SE "GIPROKOKS", therefore it is strictly forbidden to use it (in whole or partially) without written permission from SE "GIPROKOKS" for copying, processing, reusing, transferring to third parties, for other facilities and purposes									
					SUBMITTED FOR APPROVAL		REFERENCE		
01	03.2023	Letter TN0014-CS							
REV. No.	DATE	DESCRIPTION	REV. BY	CHK. BY					
		E.S.Co		DSGN			Coke Oven No.2 Reconstruction. Coke Oven Battery Foundation BUTTRESS WALL, SECTIONS Battery Centre Line		
				DRWN	BK	07.2023			
				CHECKED	DS	08.2023			
				DS	08.2023				
		EMPLOYER BHLAI ENGINEERING CORPORATION LIMITED		APPROVED					
		CONTRACTOR SE"GIPROKOKS"		DRG. SIZE	A1	SCALE	1:10	SHEET	1 of 1
				CONTR. DRG. NO.:				REF.	Sh.K-15
				PROJECT DRG. NO.:	D-ES-CM-CO-11-17-CV-110-I-O				